

# Finally... Fault-Tolerant I/O for Your Imperfect World.

*EtherTRAK-2 Process Quality I/O is a breakthrough  
in performance, reliability and ease of use.*



Class I, Div. 2

## **EtherTRAK** Fault-tolerant I/O

Keep running, even if an Ethernet cable gets cut  
Three redundant power sources survive blown fuses  
Self-resetting fuses ensure protection from shorts  
Watchdog monitoring and reporting  
Designed for 1,000,000 hours MTBF high reliability

EtherTRAK-2 I/O is "process quality I/O", complete with isolated 16 bit instrumentation analog I/O, hot swap serviceability and an impressive list of features designed to save you time and increase the performance and reliability of your automation systems.

### Product Highlights:

#### *A Remarkable Breakthrough for Industrial Automation*

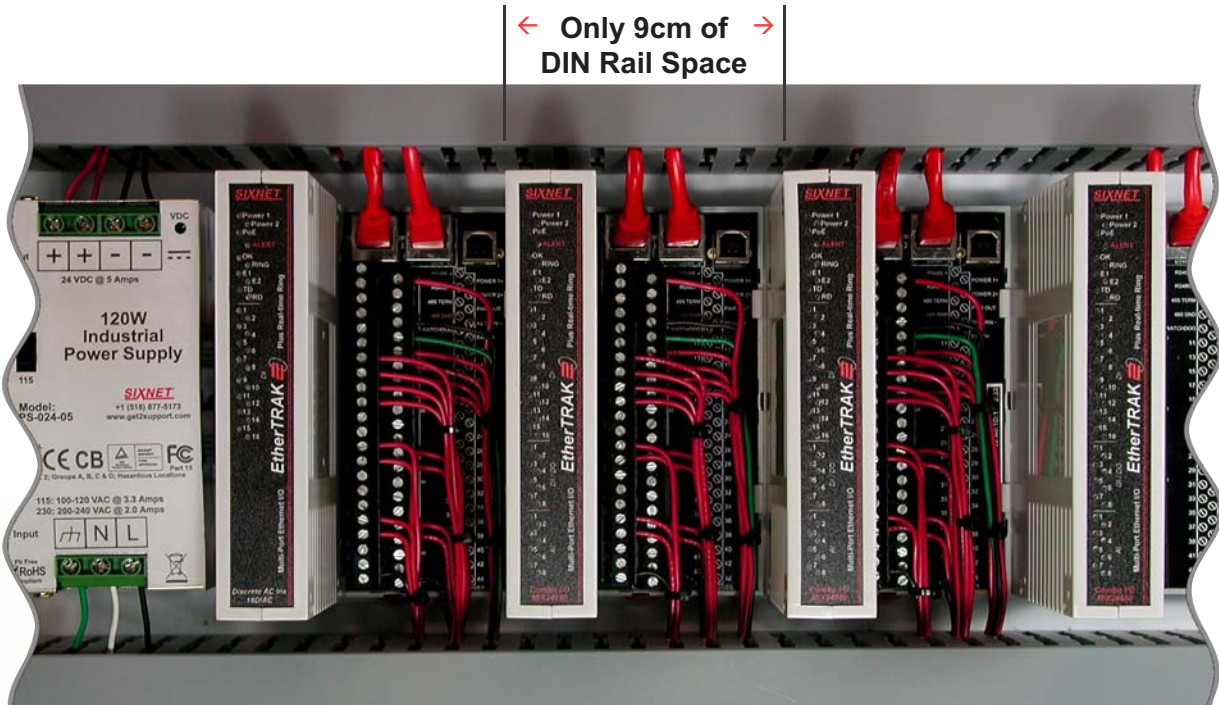
- 32 I/O in each innovative quick install, compact module
- Dual Ethernet ports with Real-time Ring™ redundancy
- Spectacular web interface - complete and easy to use
- Process Quality I/O - hot swap, watchdog, validation ...
- Lightning fast 1 mS I/O updates, infinitely expandable
- Innovative Etherbus® PoE option - eliminate power wiring
- Truly open I/O - 20 years of design life - the ultimate I/O
- Packed with innovative features

# **SIXNET**®

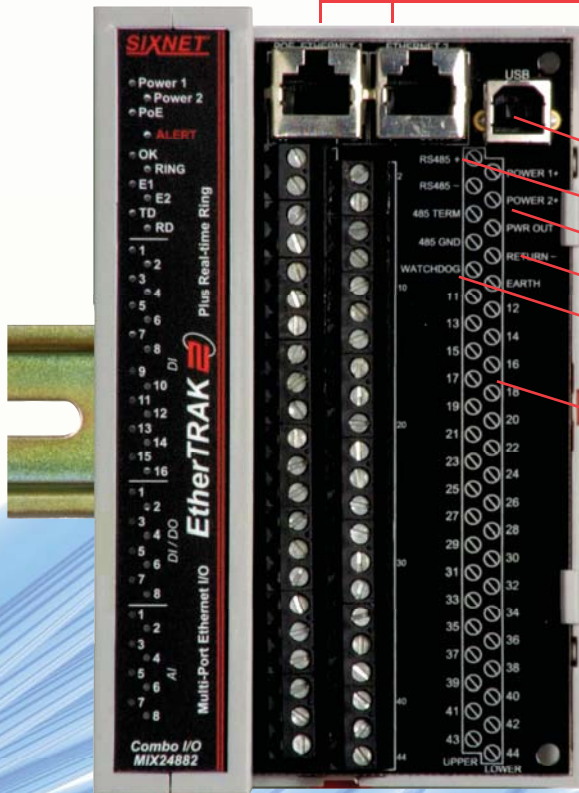
For a wealth of information:  
[www.ethertrak.com](http://www.ethertrak.com)

## High Density Mounting Ideal for In-Plant Systems Too!

The slim vertical orientation of EtherTRAK-2 forms a modular rack-style mounting that is ideal for in-plant systems with large I/O counts. Imagine! The same I/O system for both distributed and in-plant installations. Notice, the accessible wiring in a space saving form factor. EtherTRAK-2 makes your job easier.



## Vibration Tolerant, Space Saving Packaging



- ▶ Dual Ethernet Ports for:
  - Real-time Ring™ Switch Redundancy
  - Switch Elimination “Passthru”
  - Dual Independent Networks
  - Self-powered PoE convenience
- ▶ USB Port (and optional RS232 port)
- ▶ RS485 Port
- ▶ Redundant Power Inputs
- ▶ Internal PoE splitter with +24V output
- ▶ Independent Watchdog Output
- ▶ Base occupies only 9cm of DIN rail
- ▶ Up to 34 high density I/O

*Industrially Rated to Perform!*



ISO9001  
Certified



Class I, Div. 2 &  
Cenelec Zone 2



UL508  
for Safety



European  
Community



Marine &  
Offshore



USA/Canada  
Emissions



Support &  
Service Policy



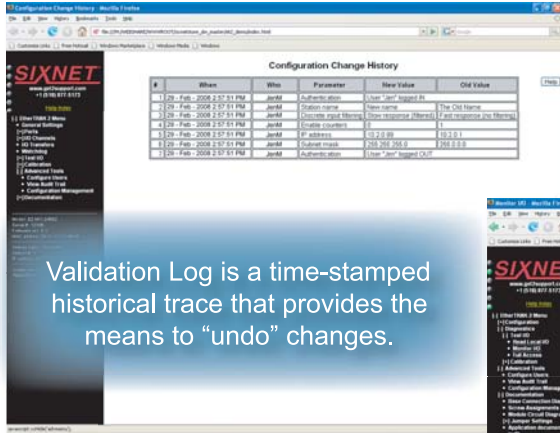
Lead & Hazardous  
Substance Free

# Web-based Tools to Configure, Maintain and Validate

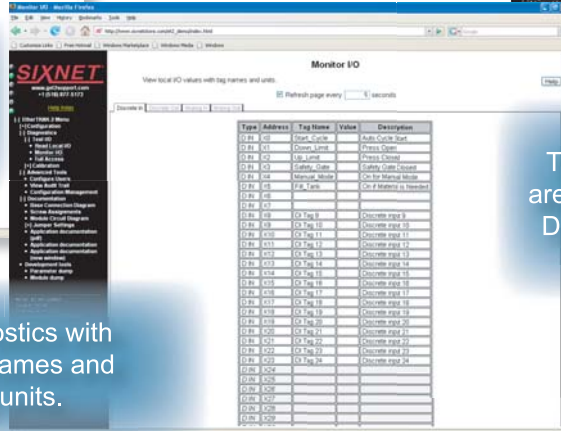
Use your preferred web browser to access feature-rich web pages in the EtherTRAK-2's embedded web server.

## Features include:

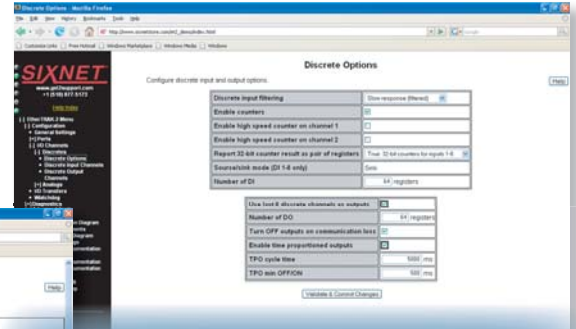
- ▶ Communication Options
- ▶ Analog Calibration
- ▶ User Documentation (Yes, you can add your own web pages!)
- ▶ I/O Configuration
- ▶ Advanced Tools
- ▶ Maintenance and Monitoring
- ▶ Password Security
- ▶ "Undo" Web Features



Validation Log is a time-stamped historical trace that provides the means to "undo" changes.

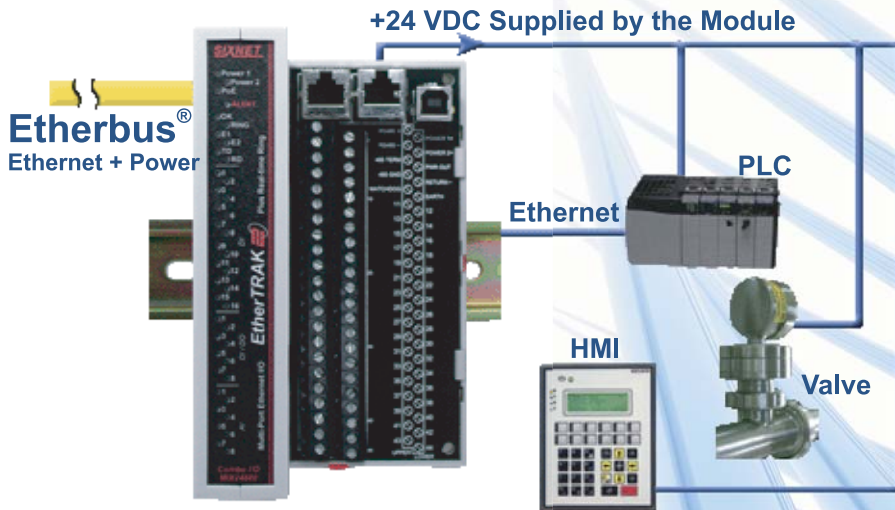


Real-time diagnostics with meaningful tag names and engineering units.



The flexible options of these I/O modules are easily configured with the web interface. Detailed online help explains each option.

**View the Web Configuration**  
[www.sixnetio.com/et2-demo.html](http://www.sixnetio.com/et2-demo.html)



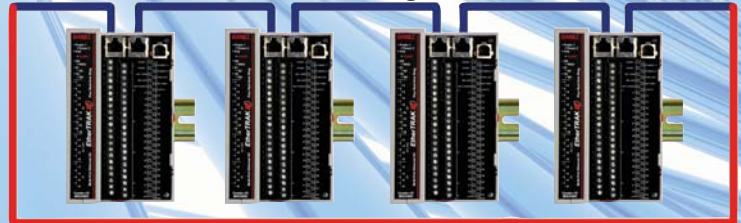
## Power over Ethernet Option

Reduce cost by eliminating power wiring and supplying power directly through the Ethernet cable. The internal 24 VDC power supply in the Etherbus® I/O module supplies power to run your operator interfaces, instrumentation and additional EtherTRAK-2 modules. Approximately 10 Watts of power is available. Any conventional 24 VDC devices can be powered by the Etherbus® PoE-generated power output.

## Two Ethernet Ports with Real-time Ring™

Built-in Ethernet switch passes Ethernet traffic between the two ports permitting you to daisy chain modules without external switches. Connecting the last device back to the first forms a Real-Time Ring™, creating redundant Ethernet reliability.

## 5 mS Real-time Ethernet Ring



# Ordering Information / Selection Guide

Part Number Prefixes <sup>2</sup>	Part Number (Module w/Base)	DI <sup>1</sup>	DO	AI	AO	Description
E2- or EB-	MIX24880-D	24	8	8	0	Combination I/O with 16 counters (one with an isolated input)
E2- or EB-	MIX24882-D	24	8	8	2	Combination I/O with two analog outputs
E2- or EB-	32DI24-D	32				32 inputs (10-30 VDC) including 16 multifunction counters
E2- or EB-	16DI24-D	16				16 individually isolated 10-30 VAC/VDC with counters
E2-	16DIAC-D	16				16 individually isolated 120 VAC (nominal) inputs
E2- or EB-	32DO24-D		32			High density discrete outputs (0.5 Amp each, 8 Amp total)
E2- or EB-	16DO24-D		16			Individually isolated 1 Amp outputs with self-resetting fuses
E2- or EB-	32AI20M-D			32		High density 16 bit 4-20 mA inputs with self-resetting fuses
E2- or EB-	32AI10V-D			32		Voltage inputs (other ranges available as special order)
E2- or EB-	16AI20M-D			16		16 channels 4-20 mA inputs with self-resetting fuses
E2- or EB-	8AO20M-D				8	4-20 mA analog outputs
E2- or EB-	16AI-8AO-D			16	8	16 4-20 mA analog inputs and 8 4-20 mA outputs
E2- or EB-	16INS-D			16TC		16 instrumentation inputs with J,K,E,R,T,B,C,N,S thermocouples
E2- or EB-	8INS-D			8TC		8 instrumentation inputs with J,K,E,R,T,B,C,N,S thermocouples
E2- or EB-	8RTD-8DI-D	8	8	8RTD		RTD (100 Ohm platinum), -200 to 850°C plus 8 auxiliary discrete in/out

Note: EB- part number prefix (above) is for modules that include the optional Etherbus® PoE feature. Standard product part numbers begin with E2.

## A Complete Family of Industrial Solutions



### Space Saver Managed Switches

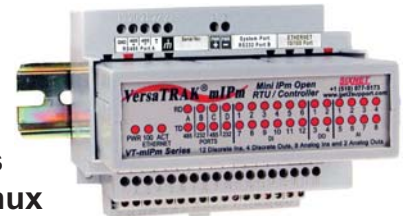
SIXNET industrial Ethernet managed switches offer a feature-rich suite of real-time network management functions.

SIXNET Products carry a 20-year  
Support & Service Promise!



### Cellular Connectivity

We offer a complete line of industrially hardened, cellular data solutions from BlueTree Wireless Inc.



### Controllers and RTUs with Open-Source Linux

SIXNET IPm is a combination of installation-ready industrial controllers and RTUs and a wealth of powerful software solutions.

Contact your local **SIXNET** representative today



Request Your  
**FREE Product CD at**  
<http://www.sixnetio.com>

EtherTRAK-2 Brochure - Rev: March 2008

### SIXNET Technology Park

Clifton Park, NY  
T: +1 (518) 877-5173  
F: +1 (518) 877-8346  
sales@sixnetio.com  
support@sixnetio.com

### SIXNET Europe

Hellendoorn, The Netherlands  
T: +31 (0) 548 659046  
F: +31 (0) 548 659010  
sixnet@sixnetio.eu

### SIXNET United Kingdom

Leicestershire, UK  
T: +44 (0) 794 931 4162  
tomr@sixnetio.org

### BlueTree Wireless Data Inc.

Montréal, Québec  
T: +1 (514) 422-9110  
F: +1 (514) 422-3338  
sales@bluetreewireless.com

### Beijing SIXNET

Beijing, P.R. China  
T: +86 10 5877 2637  
F: +86 10 5877 2640  
liqiguang@sixnetio.org

### SIXNET Southeast Asia

Singapore, Singapore  
T: +65 6742 2869  
F: +65 6234 3704  
gandhi@sixnetio.org